

Civil Service Sailing Association
Inter-Departmental Offshore Regatta

SAILING INSTRUCTIONS
2009

Patron
Her Majesty The Queen

Admiral
R.A.Aisher, OBE

Commodore
WG Pimlott

Vice Commodore
Mr R Nicholls

Rear Commodores
Mrs L Fair
Mr A Munds

ALSO SENT WITH THIS DOCUMENT:

- Central Solent Chart
- East and West Chart
- Course Marks and Symbols

Island Sailing Club SAILING INSTRUCTIONS

Civil Service Sailing Association Inter-Departmental Offshore Regatta 2009

All times are BST

1 RULES

- 1.1 The series of races will be governed by the 'rules' as defined in *The Racing Rules of Sailing* (RRS), the prescriptions of the RYA, and the ISAF Offshore Special Regulations for Category 4 races.
- 1.2 In case of conflict, the Sailing Instructions shall prevail. This changes RRS 63.7

2 NOTICES TO COMPETITORS

Notices to competitors will be posted on the official notice board located in the Lower Marquee at the Island Sailing Club.

3 CHANGES TO SAILING INSTRUCTIONS

Any changes to the Sailing Instructions will be announced by the Race Officer over VHF channel 37A(M). Changes will also be indicated by displaying code flag "L" from the ISC Flagstaff together with the numeral pennant denoting the latest amendment. It is the responsibility of all competitors to obtain this information.

4 SIGNALS MADE ASHORE

Signals will be displayed on the Island Sailing Club flagstaff.

5 SCHEDULE OF RACES

All boats will be split into 2 fleets at the briefing

Date	Details	HW Portsmouth	Warning Signal
Sunday 31 st May	Collect Yachts from Sunsail	0519 1807	-
Monday 1 st June	Crew Training / practice day/ <u>optional practice race (self start)</u> ISC for Skippers Briefing 2000hrs	0624 1911	1600
Tuesday 2 nd June	RACE 1 - Offshore Race (Possibly Christchurch)	0732 4.0m	0730
	RACE 2 - Local inshore Race	2014 4.3m	ASAP after Race 1
Wednesday 3 rd June	RACE 3 - Offshore Race (Round the Island if possible)	0836 4.0m 2112 4.3m	0800
Thursday 4 th June	RACE 4 - Inshore Race	0936 4.1m 2205 4.4m	0830
	RACE 5 - Inshore Race		ASAP after Race 4
	RACE 6 - Inshore Race		ASAP after Race 5
Friday 5 th June	RACE 7 - Offshore Race (Self finishing)	1030 4.2 2252 4.4	1000

6 CLASS AND FLEET FLAGS

The Class Flag is the Sunsail flag.

Fleet flags will be distributed at the briefing and must be flown from the backstay.

Fleet 1 will be given **International Code Flag E**

Fleet 2 will be given **International Code Flag M**

Both fleets will start at the same time in all races

7 RACING AREA

The Solent, Isle of Wight, Hayling Bay, Christchurch Bay and Poole Bay.

8 THE COURSES

8.1 Except for Race 3, which may be Round the Island, the course will consist of a series of fixed marks. The course will be displayed in the frame on the Clubhouse roof next to the Race Box. The course is indicated by letters, numbers or symbols, reading from left to right, top to bottom. The course may be announced on VHF Channel 37A (M) before and/or after the warning signal.

8.1.1 An ORANGE or RED letter, number or symbol indicates the mark shall be left to PORT.

8.1.2 A YELLOW or GREEN letter, number or symbol indicates the mark shall be left to STARBOARD.

8.1.3 Marks are listed at the back of these Sailing Instructions.

8.2 If Race 3 is to be Round the Island, Flag R will be displayed 30 minutes before the scheduled time for the warning signal. Boats will cross the Starting Line to the Westward leaving the West Cardinal "Bridge Buoy" to Port, past St Catherine's Lighthouse, rounding Bembridge Ledge Buoy to Port and to cross the finish line from East to West. If Flag R is not displayed, the course for Race 3 will be displayed as described in Para 7.1 for all other races.

9 MARKS

Marks used will be fixed navigation buoys or racing marks chosen from the list sent with these Sailing Instructions, or downloaded from http://www.islandsc.org.uk/racing_charts.aspx except for the fixed course for Race 3, when Flag R is signalled.

9 AREAS THAT ARE OBSTRUCTIONS

10.1 Boats must not anchor or kedge within the area between Stone Point and Gurnard Bay as indicated on the SCRA racing chart and Admiralty Chart 2040. Gas and water pipes, telephone cables and electricity cables carrying 133,000 volts lie on the surface of the seabed.

10.2 Boats in whatever direction they are racing shall not pass to the north of:

9.2.1 Horse Sand Fort.

9.2.2 The obstructions on the row of iron piles off Durns Point, east of Lymington.

10.3 The 'Moving Prohibited Zone' referred to in Associated British Ports Byelaw 11 shall rank as an obstruction to boats racing (See diagram at the end of these sailing instructions).

11 THE START

11.1 Starting Line

The Starting Line will be the extension of a line through the two Club Flagstaffs, each bearing an orange panel with a black cross.

11.2 The Outer Distance Mark

The outer distance mark (ODM) is a specially laid orange inflatable cylindrical buoy. If for any reason this buoy is not laid, the ODM will be the yellow Trinity House mooring buoy.

11.3 Inner Distance Mark

An Inner Distance Mark (IDM) if laid will be a black inflatable cylindrical buoy. If laid, boats shall pass between it and the ODM when approaching to start.

11.4 Starting Procedure

A boat starting later than 10 minutes after her start shall be scored DNS. The starting procedure will be
5 Minute warning flag
4 minute
1 minute
Go

12 THE FINISH

12.1 The finishing line will be the line between the rear ISC Club Flagstaff and the yellow cylindrical Trinity House mooring buoy.

12.2 For race 7, boats are asked to note their own finish times and the sail number of the boats ahead and astern, if possible when Spit Sand Fort bears 270° M (i.e. Leave to Port)

12.3 Boats shall keep well clear of the finishing line after finishing.

13 PENALTY SYSTEM

A boat that is OCS in any of the Offshore races will be scored with a time penalty of 5% of the boat's elapsed time, rounded to the nearest second, unless the Race Committee decides that she has gained a significant advantage, in which case she shall be scored as OCS. This changes RRS A4.2.

14 TIME LIMITS

14.1 The time limits are as follows:

RACE NUMBER	RACE DESCRIPTION	TIME LIMIT
RACE 1	Offshore Race (Possibly Christchurch)	7 hours
RACE 2	Inshore Race	2 hours
RACE 3	Offshore Race (Possibly Round the Island)	11 hours
RACE 4	Inshore Race	3 hours
RACE 5	Inshore Race	2 hours
RACE 6	Inshore Race	2 hours
RACE 7	Offshore Race	4 hours

Boats not finishing within 30 minutes of the first boat to finish in Races 2, 4, 5 & 6 or within the time limit, whichever is the later, will be scored DNF. Boats not finishing within 45 minutes of the first boat to finish in Races 1 & 7 or within the time limit, whichever is the later, will be scored DNF. This changes RRS 35.

- 14.2 Should it be apparent that races 1, 3 or 7 cannot be completed within the time limit, then the Race Officer has authority if possible to prematurely end that race under rule 32.1 RRS and reschedule a further race that will be in addition to those detailed above.

15 PROTESTS AND REQUESTS FOR REDRESS

Protests shall be lodged at the Race Office at the ISC not later than two hours after the protesting boat has finished racing for the day or within 1 hour of the race time limit, whichever is the earlier. The time and place of any hearing will be displayed on the official notice board. It is the responsibility of both the protestor and protestee to establish the time and place of the hearing. Protest hearings will normally take place on the day of the race.

16 SCORING

- 16.1 Offshore races will count for double points. All races are to count towards series prizes. This changes RRS A2

17 SAFETY REGULATIONS

Boats are requested to advise the Race Committee of their retirement as soon as possible, either by VHF Radio on channel 37A (M) or by telephone to 01983 249436 (Race Box) or 01983 249 431 (ISC Office) 0900 – 1700hrs

18 RADIO COMMUNICATION

- 18.1 The Race Committee may communicate race information to competitors on VHF Channel 37A (M). No acknowledgement to these announcements will be required and no return traffic will be acknowledged.

19 PRIZES

Trophies and prizes will be presented at either the regatta dinner or at the Civil Service Sailing Association AGM (time and place to be announced).

20 DISCLAIMER OF LIABILITY

The Island Sailing Club is providing these races only on the understanding that the Club and its representatives shall not be liable for any loss, damage, death or personal injury howsoever caused to the owner/competitor, his skipper or crew, as a result of their taking part in the race. Moreover, every owner/competitor warrants the suitability of his boat for the race. The safety of a boat and her entire management, including insurance, shall be the sole responsibility of the owner/competitor who must ensure that the boat is fully found, thoroughly seaworthy and manned by a crew of sufficient number and experience who are physically fit to face bad weather. The owner/competitor must be satisfied as to the soundness of the hull, spars, rigging, sails and all gear. He must ensure that all safety equipment is properly maintained, stowed and in date and that the crew know where it is kept and how it is to be used. Neither the establishment of these conditions, their use by the race organisers, nor the inspection of the boat under these conditions in any way limits the absolute responsibility of the owner/competitor. The crew are nonetheless advised to satisfy themselves as to the experience of the skipper and the adequacy of all safety equipment and insurance arrangements.

21 RYA CHARTER

Competitors should note that the Island Sailing Club implements the RYA Racing Charter and that competitors will be required to undertake to sail in compliance with the Charter, which can be found at the front of the RYA Rulebook (Racing Rules of Sailing 2009-2012) or on the internet at www.rya.org.uk/racing/charter

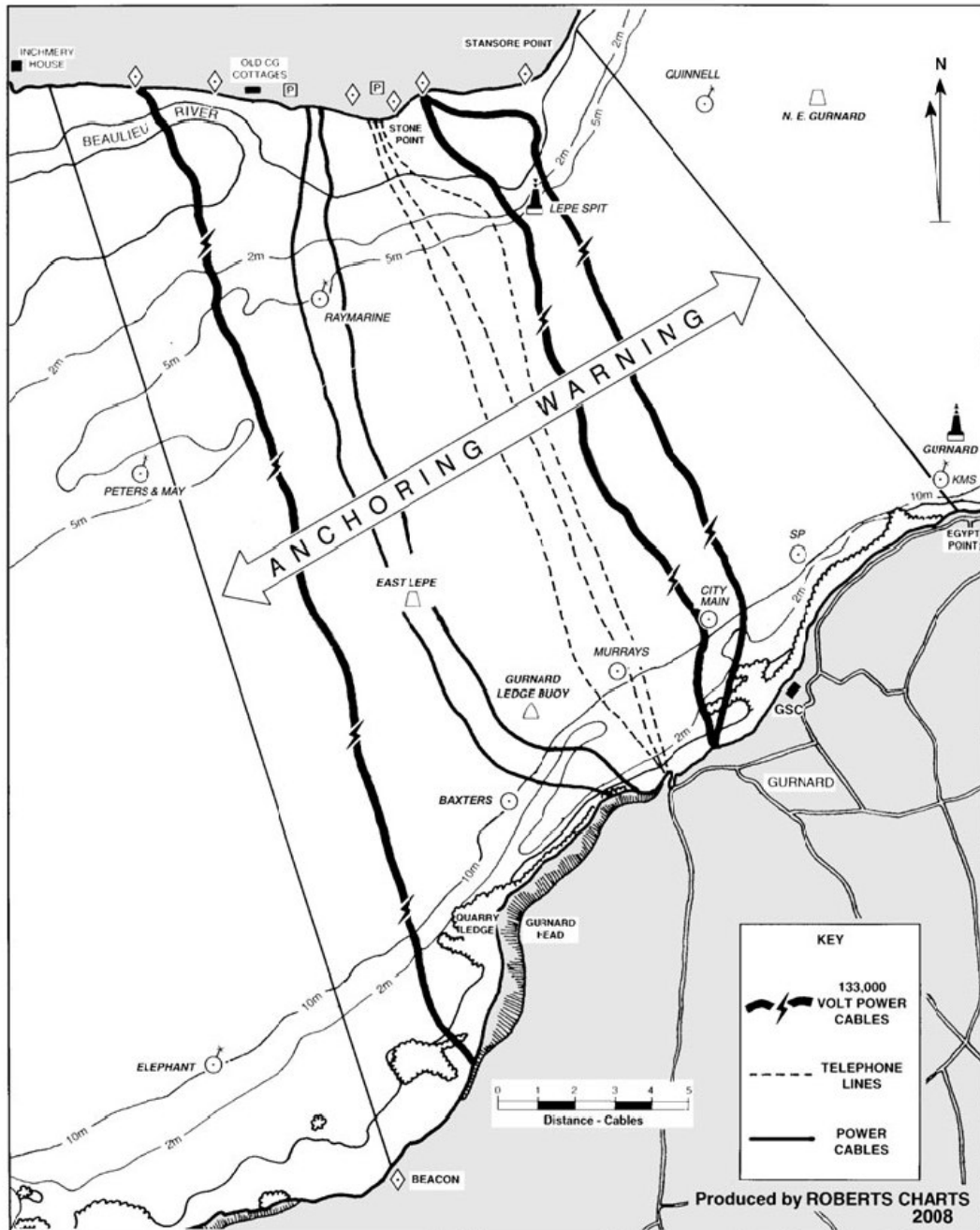
22 INSURANCE

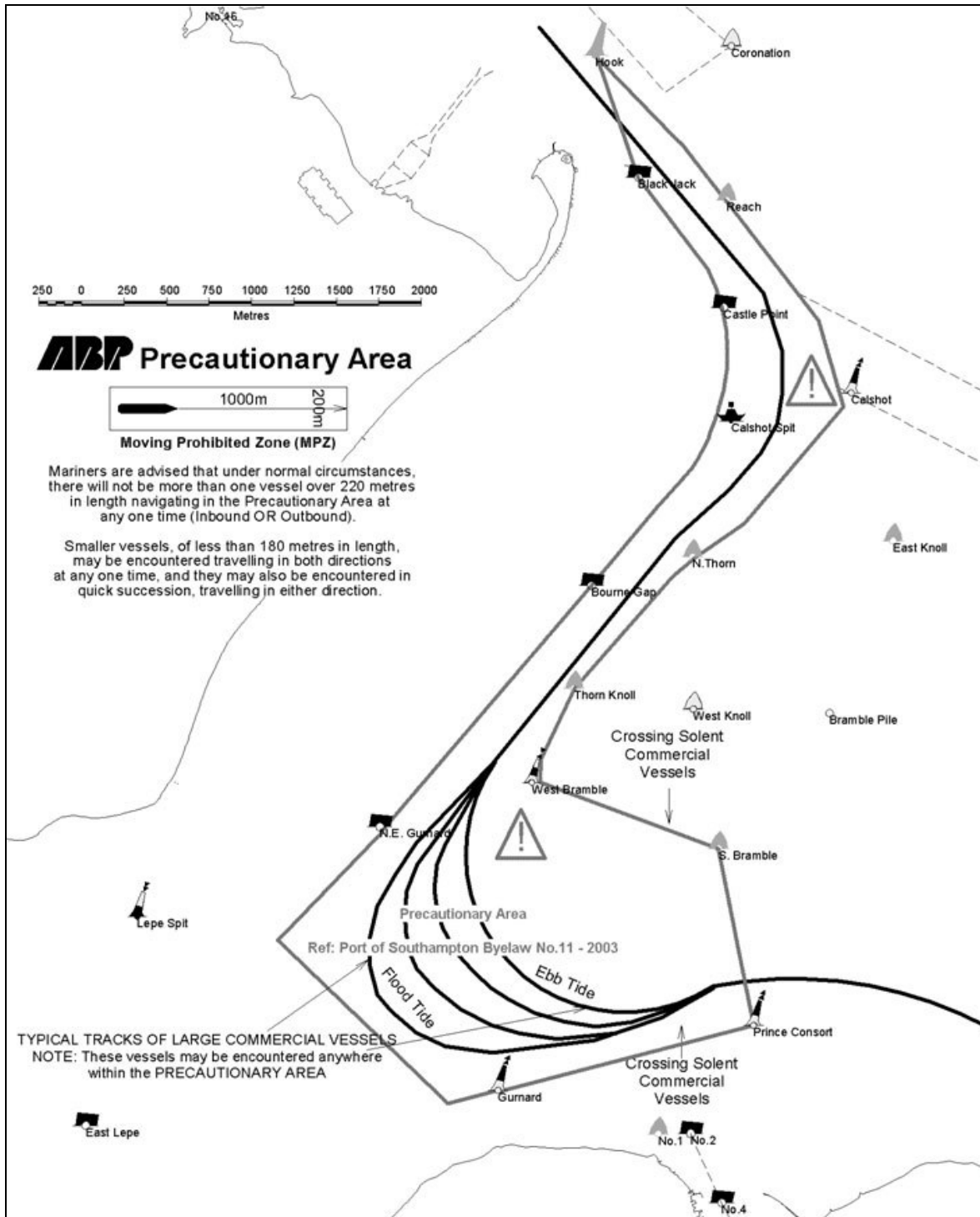
Each participating boat shall be insured with valid third-party liability insurance with a minimum cover of £2,000,000 per event or the equivalent.

HIGH VOLTAGE CABLES AND PIPELINES

BETWEEN STONE POINT AND GURNARD

(SEE ADMIRALTY CHART 2040 - THE SOLENT - WESTERN PART)





[END]